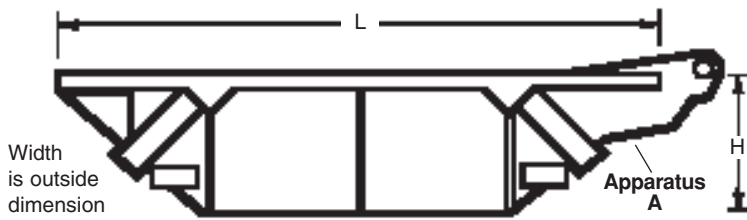


Bedding Boxes



All Boxes below include Apparatus A



LIGHT DUTY BEDDING BOXES includes Apparatus "A"					
Model No.	Capacity	Wt. Lbs. (empty)	Outside Width	Outside Length	Height
BL-4	4 CYDS	3,228	54"	13'	44"
BL-7	7 CYDS	4,480	60"	16'	44"
BL-9	9 CYDS	5,061	72"	16'	44"
STANDARD DUTY BEDDING BOXES – Includes Apparatus "A"					
BS-5	5 CYDS	4,423	60"	13'	44"
BS-7	7 CYDS	5,078	60"	16'	44"
BS-8	8 CYDS	5,133	66"	16'	44"
BS-9	9 CYDS	5,608	72"	16'	44"
BS-12	12 CYDS	6,631	96"	16'	44"
HEAVY DUTY BEDDING BOXES – Includes Apparatus "A"					
BH-9	9 CYDS	6,310	72"	16'	44"
BH-12	12 CYDS	7,438	96"	16'	44"
BH-15	15 CYDS	8,766	96"	20'	44"

LIGHT DUTY BEDDING BOXES

The BL4, BL7, and BL9 Light Duty are designed for use with lighter machinery. The top frame is further strengthened by an inner core of hardwood. It is constructed of 3/16" plate at the ends and sides, and 3/8" plate on the bottom. Wear strip on bottom and a 44" profile is standard on these boxes.

STANDARD DUTY BEDDING BOXES

BS5, BS7, BS8 and BS9. The Standard unit features rugged steel welded construction, fully reinforced at all points of stress. The top frame is further strengthened by an inner core of hardwood. This unit is constructed of 1/4" sides and ends, and the bottom surface is smooth; fabricated of 1/2" steel plate, with wear strips on the inside to guard against damage by bucket teeth. Low 44" profile allows dump truck to fill the box from either end or side.

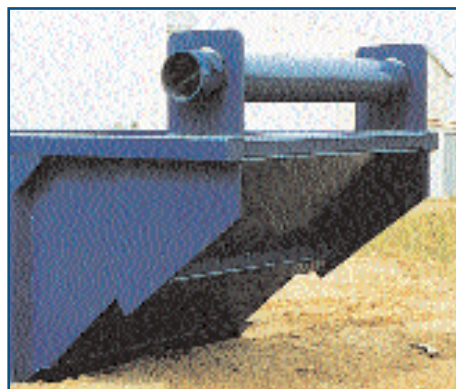
HEAVY DUTY BEDDING BOXES

BH9, BH12, and BH15. The BH Heavy Duty box is just right for use with heavy machinery. The top frame is further strengthened by an inner core of hardwood. It is constructed of 3/8" plate at sides and ends and 1/2" plate on the bottom. Wear strips are on the inside bottom and a 44" profile are standard on the heavy duty box. The clean sweep end and corners are reinforced for that extra toughness often required for many construction needs.



Apparatus "B" Option

The Apparatus "B" option, available on all models of the GME® bedding box, makes repositioning the box easy and quick. It is reinforced and fully welded at all stress points and gussets have been added for extra strength.



ICM of America
Internet Sales
877-494-5793