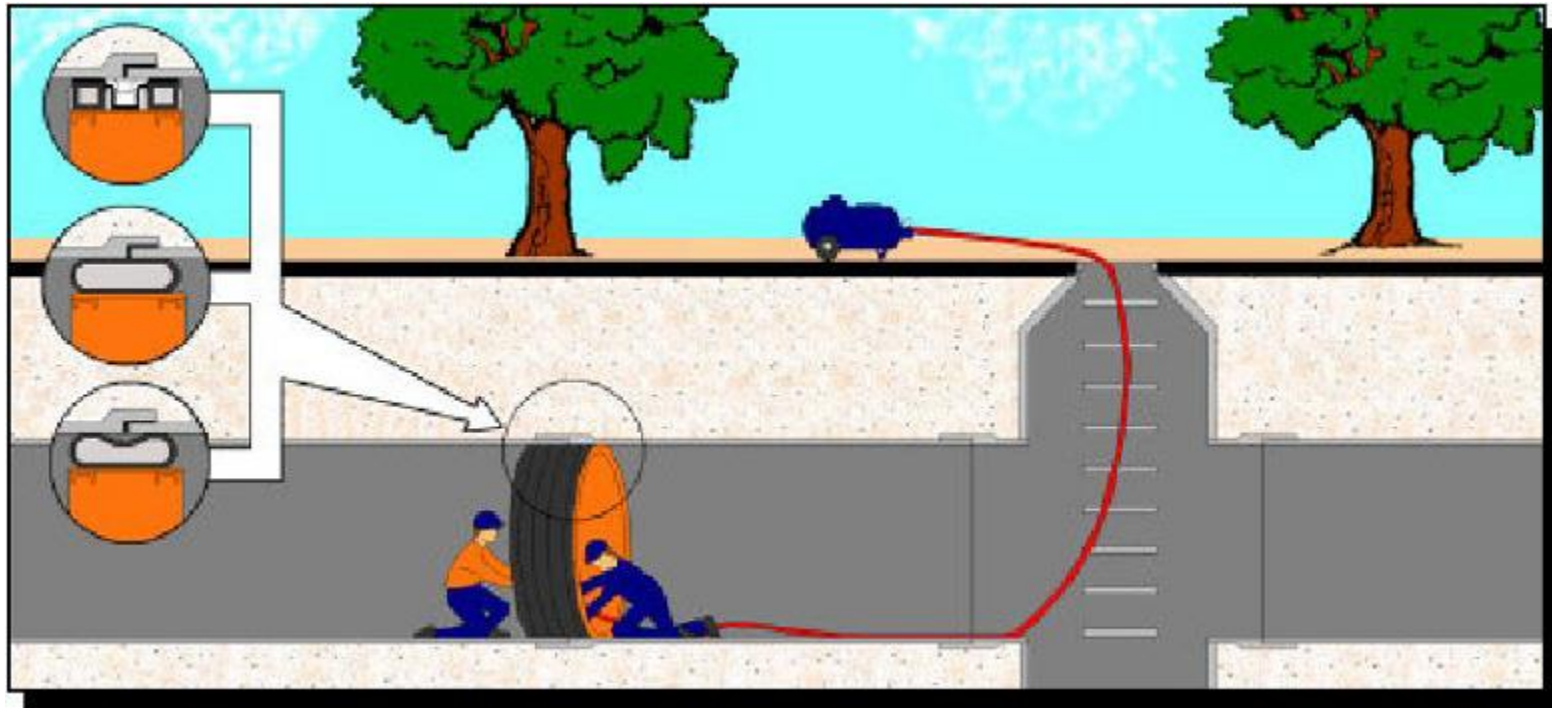


## LOW & HIGH PRESSURE JOINT TESTERS

**THE LANSAS® SINGLE BLADDER JOINT TESTERS** are available for testing up to 100 PSI. They are designed to fit pipe sizes ranging from 24" - 120". Lansas® has manufactured joint testers to 21 feet in diameter and for pressures in excess of 200 PSI. Each Lansas® joint tester is equipped with adjustable wheels that allow for easy transportation through the pipeline. A test panel is included.

**THE LANSAS® TEST PANEL** is designed to be used with air and/or water. There are no additional components that are needed. Lansas® joint testers can be used to test virtually any type of pipe material including concrete, ductile iron, polyethylene, PVC, steel, as well as concrete pipes with plastic liners.



Single-Size Low and High Pressure Joint Testers

20 PSI TEST PRESSURE			100 PSI TEST PRESSURE			SPECIFICATIONS		
PART#	MAXIMUM INFLATION PRESSURE	MAXIMUM TESTING PRESSURE	PART#	MAXIMUM INFLATION PRESSURE	MAXIMUM TESTING PRESSURE	FOR PIPE SIZE	MIN. PIPE DIA.	MAX. PIPE DIA.
432-24	60 PSI	20 PSI	434-24	160 PSI	100 PSI	24"	23.0"	24.25"
432-27	60 PSI	20 PSI	434-27	160 PSI	100 PSI	27"	26.0"	27.25"
432-30	60 PSI	20 PSI	434-30	160 PSI	100 PSI	30"	29.0"	30.25"
432-33	60 PSI	20 PSI	434-33	160 PSI	100 PSI	33"	32.0"	33.25"
432-36	60 PSI	20 PSI	434-36	160 PSI	100 PSI	36"	35.0"	36.25"
432-39	60 PSI	20 PSI	434-39	160 PSI	100 PSI	39"	38.0"	39.25"
432-42	60 PSI	20 PSI	434-42	160 PSI	100 PSI	42"	41.0"	42.25"
432-45	60 PSI	20 PSI	434-45	160 PSI	100 PSI	45"	44.0"	45.25"
432-48	60 PSI	20 PSI	434-48	160 PSI	100 PSI	48"	47.0"	48.25"
432-54	60 PSI	20 PSI	434-54	160 PSI	100 PSI	54"	53.0"	54.25"
432-60	60 PSI	20 PSI	434-60	160 PSI	100 PSI	60"	59.0"	60.25"
432-66	60 PSI	20 PSI	434-66	160 PSI	100 PSI	66"	65.0"	66.25"
432-72	60 PSI	20 PSI	434-72	160 PSI	100 PSI	72"	71.0"	72.25"
432-78	60 PSI	20 PSI	434-78	160 PSI	100 PSI	78"	77.0"	78.25"
432-84	60 PSI	20 PSI	434-84	160 PSI	100 PSI	84"	83.0"	84.25"
432-90	60 PSI	20 PSI	434-90	160 PSI	100 PSI	90"	89.0"	90.25"
432-96	60 PSI	20 PSI	434-96	160 PSI	100 PSI	96"	95.0"	96.25"
432-102	60 PSI	20 PSI	434-102	160 PSI	100 PSI	102"	101.0"	102.25"
432-108	60 PSI	20 PSI	434-108	160 PSI	100 PSI	108"	107.0"	108.25"
432-114	60 PSI	20 PSI	434-114	160 PSI	100 PSI	114"	113.0"	114.25"
432-120	60 PSI	20 PSI	434-120	160 PSI	100 PSI	120"	119.0"	120.25"

ICM OF AMERICA INTERNET SALES  
877-494-5793