

# HIGH PRESSURE SWIVEL



P/N



Hose Con.

| P/N  | Hose Con. | Description              |
|------|-----------|--------------------------|
| 1650 | 1 1/4"    | Swivel Joint male/female |
| 1651 | 1"        | Swivel Joint male/female |
| 1652 | 3/4"      | Swivel Joint male/female |
| 1653 | 1/2"      | Swivel Joint male/female |

**High Pressure Swivels** are made from hardened stainless steel and allow for full water flow. HP swivels are made for bottom cleaners, nozzles for bigger pipe and cutters.

ICM OF AMERICA

877-494-5793

# REDUCERS | COLLARS



## ENLARGING COLLAR - STAINLESS STEEL

| Barcode | Spring    | Image           |
|---------|-----------|-----------------|
| 1810    | 1" male   | x 1 1/4" female |
| 1811    | 3/4" male | x 1" female     |
| 1812    | 1/2" male | x 3/4" female   |
| 1813    | 3/8" male | x 1/2" female   |
| 1814    | 1/4" male | x 1/2" female   |

## REDUCER - STAINLESS STEEL

| Barcode | Spring      | Image         |
|---------|-------------|---------------|
| 1820    | 1 1/4" male | x 1" female   |
| 1821    | 1" male     | x 3/4" female |
| 1822    | 3/4" male   | x 1/2" female |
| 1823    | 1/2" male   | x 3/8" female |
| 1824    | 3/8" male   | x 1/4" female |

## DOUBLE NIPPLE - GALVANIZED

| Barcode | Spring      | Image         |
|---------|-------------|---------------|
| 1830    | 1 1/4" male | x 1 1/4" male |
| 1831    | 1 1/4" male | x 1" male     |
| 1832    | 1" male     | x 1" male     |
| 1833    | 1" male     | x 3/4" male   |
| 1834    | 3/4" male   | x 3/4" male   |
| 1835    | 3/4" male   | x 1/2" male   |
| 1836    | 1/2" male   | x 1/2" male   |
| 1837    | 1/2" male   | x 3/8" male   |
| 1838    | 3/8" male   | x 1/4" male   |
| 1839    | 1/4" male   | x 1/4" male   |
| 1840    | 1/4" male   | x 1/8" male   |
| 1841    | 1/8" male   | x 1/8" male   |

## STRAIGHT COLLARS - STAINLESS STEEL

| Barcode | Spring      | Image           |
|---------|-------------|-----------------|
| 1850    | 1 1/4" male | x 1 1/4" female |
| 1851    | 1" male     | x 1" female     |
| 1852    | 3/4" male   | x 3/4" female   |
| 1853    | 1/2" male   | x 1/2" female   |
| 1854    | 3/8" male   | x 3/8" female   |
| 1855    | 1/4" male   | x 1/4" female   |

## FEMALE TO FEMALE FITTING - GALVANIZED

| Barcode | Spring        | Image           |
|---------|---------------|-----------------|
| 1860    | 1 1/4" female | x 1 1/4" female |
| 1861    | 1" female     | x 1" female     |
| 1862    | 3/4" female   | x 3/4" female   |
| 1863    | 1/2" female   | x 1/2" female   |
| 1864    | 3/8" female   | x 3/8" female   |
| 1865    | 1/4" female   | x 1/4" female   |

## SWIVEL FITTING - GALVANIZED

| Barcode | Spring      | Image           |
|---------|-------------|-----------------|
| 1870    | 1 1/4" male | x 1 1/4" female |
| 1871    | 1 1/4" male | x 1" female     |
| 1872    | 1" male     | x 1" female     |
| 1873    | 1" male     | x 3/4" female   |
| 1874    | 3/4" male   | x 3/4" female   |
| 1875    | 3/4" male   | x 1/2" female   |
| 1876    | 1/2" male   | x 1/2" female   |
| 1877    | 1/2" male   | x 3/8" female   |
| 1878    | 3/8" male   | x 3/8" female   |
| 1879    | 3/8" male   | x 1/4" female   |
| 1880    | 1/4" male   | x 1/4" female   |

# TOOLS | ACCESSORIES



## INSERT GAUGE



8000 0.45 - 1.5

8001 1.5 - 3.0

## T-HANDLE WRENCH FOR ISK



8010 2,0

8011 2,5

8012 3,0

8013 4,0

8014 5,0

8015 6,0

8016 8,0

## T-HANDLE WRENCH FOR ASK



8020 SW 6

8021 SW 8

8022 SW 9

8023 SW 10

8024 SW 12

8025 SW 14

8026 SW 17

## AKTIVATOR

8050 Aktivator 200 ML



## NOZZLE ADHESIVE

8055 medium strength blue 50 ml

8057 high strength, green 50 ml

## ALLEN WRENCH



8040 2,0

8041 2,5

8042 3,0

8043 4,0

8044 5,0

8045 6,0

## PUNCH FOR TURBO'S



8065 4,0

8067 5,0

8069 6,0

8070 8,0

8072 10,0

## TEFLON

8080 Teflon 1 l



## TEFLONSPRAY

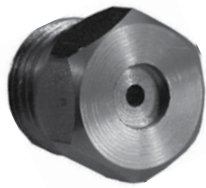
8082 Teflonspray 500 ml

8085 Teflonspray FIN SUPER 100 ml

## CARE SPRAY

8095 Care spray 500 ml

# NOZZLE INSERTS



| Barcode | Thread   | wrench size |
|---------|----------|-------------|
| 1561    | G 1/4"   | SW 14       |
| 1563    | M 10 x 1 | SW 10       |
| 1564    | G 1/8"   | SW 14       |
| 1567    | M 6      | SW 6        |
| 1568    | M 8      | SW 8        |



| Barcode | Thread   | wrench size |
|---------|----------|-------------|
| 1550    | G 1/4"   | SW 14       |
| 1551    | G 1/4"   | SW 9        |
| 1563 K  | M 10 x 1 | SW 10       |
| 1564 K  | G 1/8"   | SW 14       |
| 1527 AK | M 6      | SW 6        |
| 1528 AK | M 8      | SW 8        |



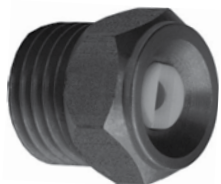
| Barcode | Thread |
|---------|--------|
| 1532    | M 12   |
| 1528    | M 8    |
| 1527    | M 6    |
| 1526    | M 5    |
| 1525    | M 4    |



| Barcode | Thread |
|---------|--------|
| 1552    | M 12   |
| 1529 K  | M 10   |
| 1528 K  | M 8    |
| 1527 K  | M 6    |



| Barcode | Thread |
|---------|--------|
| 1572    | G 1/4" |
| 1576    | G 1/4" |



| Barcode | Thread   | wrench size |
|---------|----------|-------------|
| 1573 K  | G 1/4"   | SW 14       |
| 1574 K  | G 1/8"   | SW 14       |
| 1575 K  | M 10 x 1 | SW 10       |

ICM OF AMERICA

877-494-5793