

STX-SUITE-FORKLIFT



GNSS Rover

Rugged Tablet

POSTS DEPLOYMENT

Our STX-SUITE-FORKLIFT system can be easily integrated in your Stonex GNSS network. You can even switch the GPS receiver between the forklift and pile driver machine 100% compatibility. It's easy to install and can save you a lot of time and effort. Cube-sp software was developed mainly to adapt to work with machines that require high positioning accuracy, proving to be a valuable tool for the solar industry.

The systems that use Cube-sp provide simple and intuitive indications to the operator to position the machines in the correct position, ensuring high precision throughout the duration of the work.

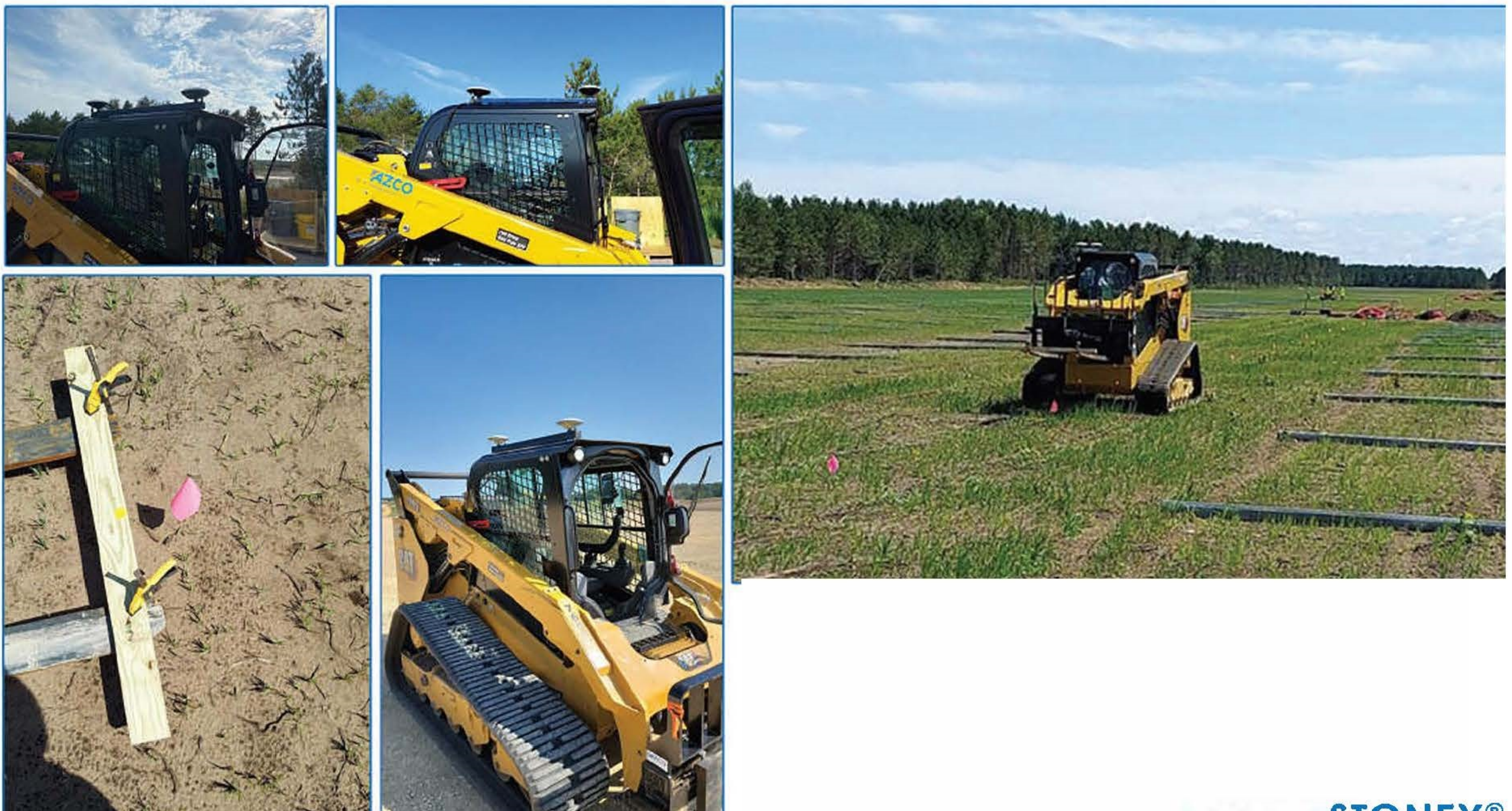
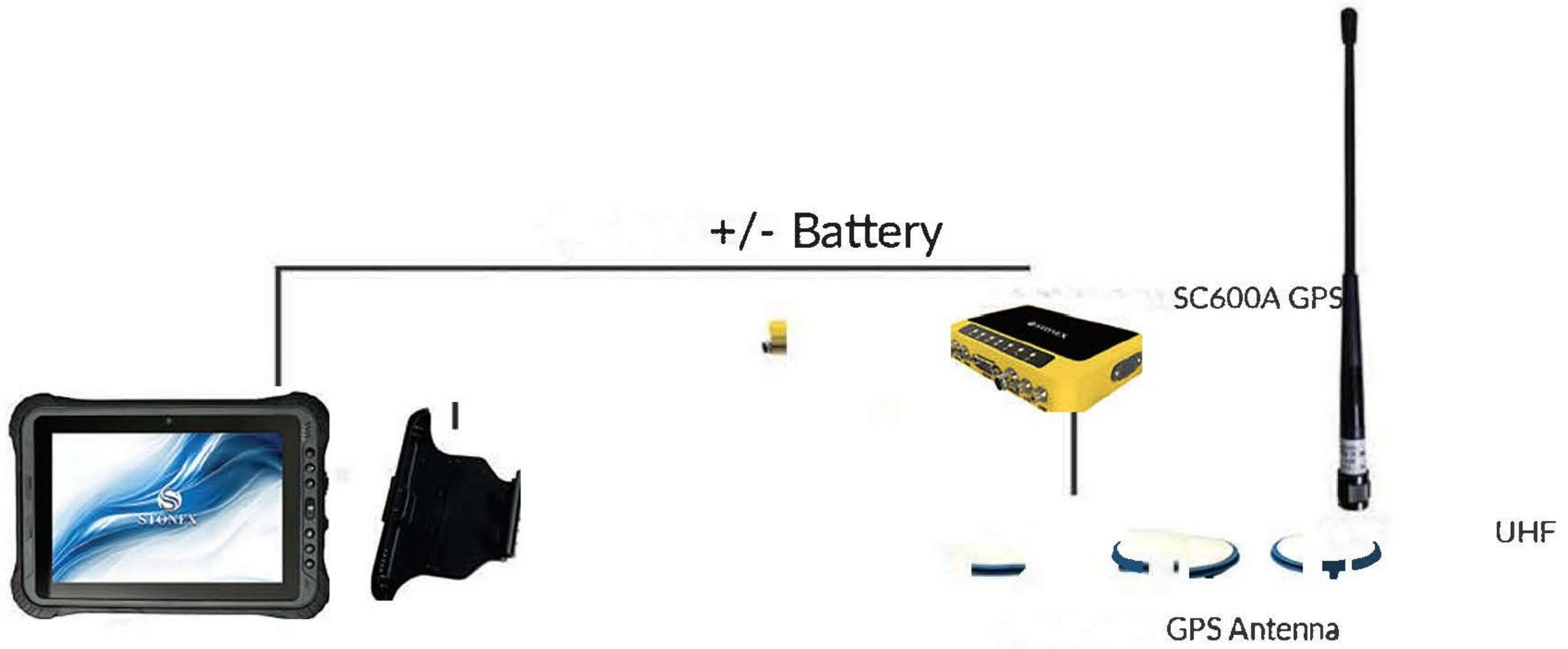


STX-SUITE

STX-SUITE is a handy and prompt system for the design of ground photovoltaic plants and the on field positioning of the pile driver machines. This Suite, allows the planning of the best piling pattern directly on the field (survey with GPS + tablet + integrated software), as well as the loading of existing CAD projects (.dwg, .dxf). Centimeter accuracy positioning is provided by two Stonex GPS receivers (up to 20Hz), installed on a metal frame integrated in the pile driver machine structure.

Once integrating your workflow quickly and effectively.

The posts can be relesed according to a predefined layout of your choice.



STONEX®